

# Trimble MX Publisher

PUBLISH UNLIMITED GEOSPATIAL DATA ON THE WEB

Share mobile mapping data across your organization and give stakeholders access via their web browser.

Enable multiple users to access and use the data for visualization, measurement, and local feature extraction. Combine point cloud data, panoramic and planar imagery, vector data and raster resources as well as 3D models into one single Trimble MX Publication.

## Define Data Access for Individual Users and Groups

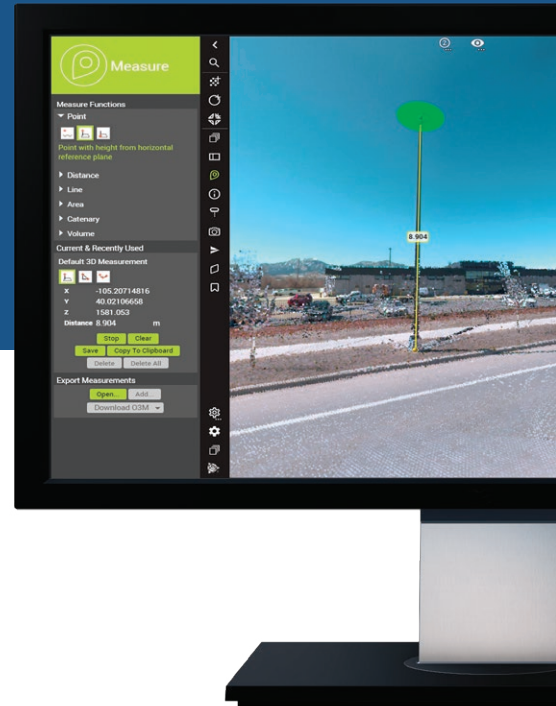
Trimble® MX Publisher enables publication administrators to set credentials for individual users and user groups, controlling their access level to the published data.

## Perform Simple but Powerful Measurements

Measure points, lines, area, catenaries, distances or volumes utilizing point cloud data and imagery. Then, save measurement results locally on your PC or in common GIS and CAD environments using the available plugins.

## Integrate with GIS and CAD Environments or With Your Own App

Trimble MX Publisher plugins allow access of your mobile mapping data through common GIS and CAD environments such as ArcMap, ArcGIS Pro, QGIS, AutoCAD. An example could be that map users can save measurement results directly into a GIS layer or geodatabase. An SDK enables you to integrate the viewer into your own application, website, GIS or CAD system.



## Key Features

- ▶ Optimize your investment by sharing mapping data inside or outside your organization
- ▶ Make 3D point clouds and immersive street level imagery accessible via a web browser
- ▶ Unlimited users can view the published data at the same time
- ▶ Integrate with popular GIS or CAD environments via plugins
- ▶ SDK makes connection to 3rd party software possible



### Trimble MX Content Manager

Get mobile mapping data organized for feature extraction and publishing. Manipulate imagery and point clouds system.



### Trimble MX Asset Modeler

Extract points, lines, areas, volumes and collect snapshots creating new layers or connecting to existing layers and databases.



### Trimble MX Publisher

Share mobile mapping data across stakeholders inside or outside your organization. Connect to common GIS or CAD environments.

## DATA DISTRIBUTION EXAMPLE



## SYSTEM REQUIREMENTS:

### GENERAL REQUIREMENTS:

Operating System ..... Microsoft® Windows® 7.8 or 10  
 Processor ..... 64bit, 2.8 GHz quad-core or higher  
 RAM ..... 16 to 32 GB  
 Graphic Card ..... No requirements

### SERVER DISKS & DISK-SPACE:

A Trimble MX Server installation is about 500MB, preferably installed on a dedicated partition. Reserve 10 to 50 GB free disk-space.

### BROWSER:

An up to date Chrome, Firefox or Safari browser.

### NETWORK:

#### Internet/Intranet Connection:

For data hosting the server upload and client download speed relative to the average size of the data to be served at the same time needs to be taken into account:

- Minimum server upload speed of 200 Mbps
- Minimum client download speed of 20 Mbps

### Port:

Trimble MX Publisher (server) - publishing client communication requires a single port to operate. The default configuration is set to port 1111, it can be reconfigured as needed. Port 80 and 443 are also required to communicate over HTTP and HTTPS respectively. In addition, a Proxy server usage is supported.

### Web server:

Trimble MX Publisher includes a web server supporting HTTP/HTTPS and WS/WSS communication.

Client access to publication: If you would like to make your Trimble MX publications available via the Internet, public access to the Trimble MX Server is required. Publications can also be configured for intranet systems.

### Web sockets:

Trimble MX Publisher Viewer and Plugins use the WebSockets communication protocol. Some systems will bypass this when using HTTPS.

Contact your local Trimble Authorized Distribution Partner for more information

**NORTH AMERICA**  
 Trimble Inc.  
 10368 Westmoor Dr  
 Westminster CO 80021  
 USA

**EUROPE**  
 Trimble Germany GmbH  
 Am Prime Parc 11  
 65479 Raunheim  
 GERMANY

**ASIA-PACIFIC**  
 Trimble Navigation  
 Singapore PTE Limited  
 3 HarbourFront Place  
 #13-02 HarbourFront Tower Two  
 Singapore 099254  
 SINGAPORE